

— NORTH SKYLINE-TUCKER TRAIL (B)
The trailhead at Tucker is at low elevation and often lacks sufficient snow for riding until mid-winter. This trail rises rapidly from the oak and juniper of the foothills into the tall hazardous conditions.

— DANIELS LOOP TRAIL (A)
This is one of the best maintained trails in the Strawberry Complex and offers excellent riding opportunities for families and beginning riders. Expansive play areas are located immediately adjacent to the trail at lower elevations. Most of the trail winds leisurely through the tall evergreens and aspens of the area, though caution is advised near the summit, as high winds can cause drifting and can create locally snow covered November through May.

— CO-OP CREEK TRAIL (F)
The Co-op Creek Trail offers tremendous views of the Strawberry Valley as it climbs through the switchbacks and turns on the mountainside. Extensive play and hill climbing areas are available near the trailhead and along the length of the trail.

— STRAWBERRY SNOWMOBILE COMPLEX

— CO-OP CREEK TRAIL (F)
The Co-op Creek Trail offers tremendous views of the Strawberry Valley as it climbs through the switchbacks and turns on the mountainside. Extensive play and hill climbing areas are available near the trailhead and along the length of the trail.

— STARVATION CREEK TRAIL (C)
The trailhead at Tucker is at low elevation and often lacks sufficient snow for riding until mid-winter. The trail rises gradually along an old railroad grade through the oaks and pin-jon-juniper forest. This area often has herds of wintering deer and elk that can be observed from the trail. The trail is easy riding for most snowmobilers and presents few surprises. This trail crosses between public and private property on an alternating basis. Riders are encouraged to watch for no trespassing signs, which indicate areas of private ownership where snowmobiling is not allowed.

— STRAWBERRY TRAIL (H)
This wide, well-groomed trail follows the western shores of Strawberry Reservoir to Renegade Point before climbing into the tree-covered slopes to the south of the reservoir. This is an excellent ride for all riders and features extensive play areas along its length. Several side loop trails intersect with the Strawberry Trail and provide excellent opportunities for riders to explore new country. Drifting is a distinct possibility along the open stretches of the trail, and because of the popularity of this trail, it can become bumpy.

STRAWBERRY COMPLEX	
A. Daniels Loop	25.6 Miles
B. North Skyline	27.9 Miles
C. Starvation Creek	12.9 Miles
F. Co-op Creek	18.3 Miles
G. Strawberry River	11.5 Miles
H. Strawberry	37.5 Miles
I. Indian Creek	10 Miles
K. Lou's Cut-Off	3 Miles
M. Mud Creek	8 Miles
N. Marina	2.5 Miles

timber during storms, and snowmobilers are cautioned to be on the constant lookout for trees on the trail. Also the narrow nature of the trail requires extra caution, as riders must be on the lookout for oncoming traffic. Strong winds near the summit to the north can cause cornices to form on the hillsides. Hill climbers are cautioned to avoid corniced ridges.

STRAWBERRY SNOWMOBILE COMPLEX



Snowmobilers are urged to telephone the Avalanche Forecast Center for updated snow conditions and weather information before venturing into the backcountry.

Salt Lake City.....	801-364-1581
Ogden.....	801-626-8600
Provo.....	801-378-4333
Logan.....	435-797-4146

For local conditions and grooming information contact:

Utah Division of State Parks and Recreation
1-800-OHV-RIDE (1-800-648-7433)
801-538-7433 (Salt Lake City area)

Utah Department of Transportation
Road Conditions 1-800-492-2400

Wasatch-Cache National Forest
Kamas Ranger District
435-783-4338

Uinta National Forest
Heber Ranger District
435-654-0470

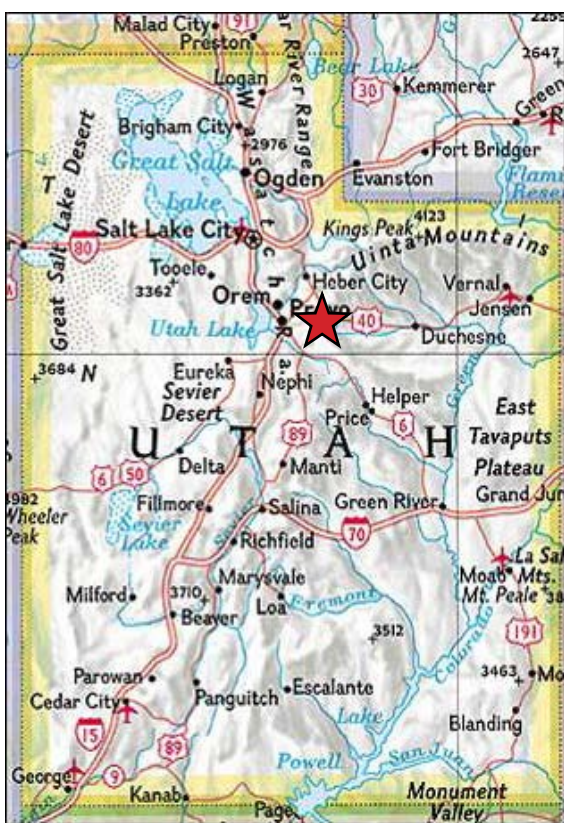
Mountain Travel Region
801-229-3800

Manti-LaSal National Forest
Price Ranger District
435-637-2817

Information contained in this map was accurate at the time of printing and/or publication. Policies, facilities, fees, hours and regulations, etc. change as mandated. Grooming is dependent on snow conditions, schedules, equipment and resources availability. For updated information please contact the Utah Division of State Parks and Recreation.

The Utah Department of Natural Resources receives federal aid and prohibits discrimination on the basis of race, color, sex, age national origin or disability. For information or complaints regarding discrimination, contact Executive Director, Utah Department of Natural Resources, PO Box 145610, Salt lake City, UT 84114-5610 or Equal Employment Opportunity Commission, 1801 L Street, NW, Washington, DC 20507-0001.

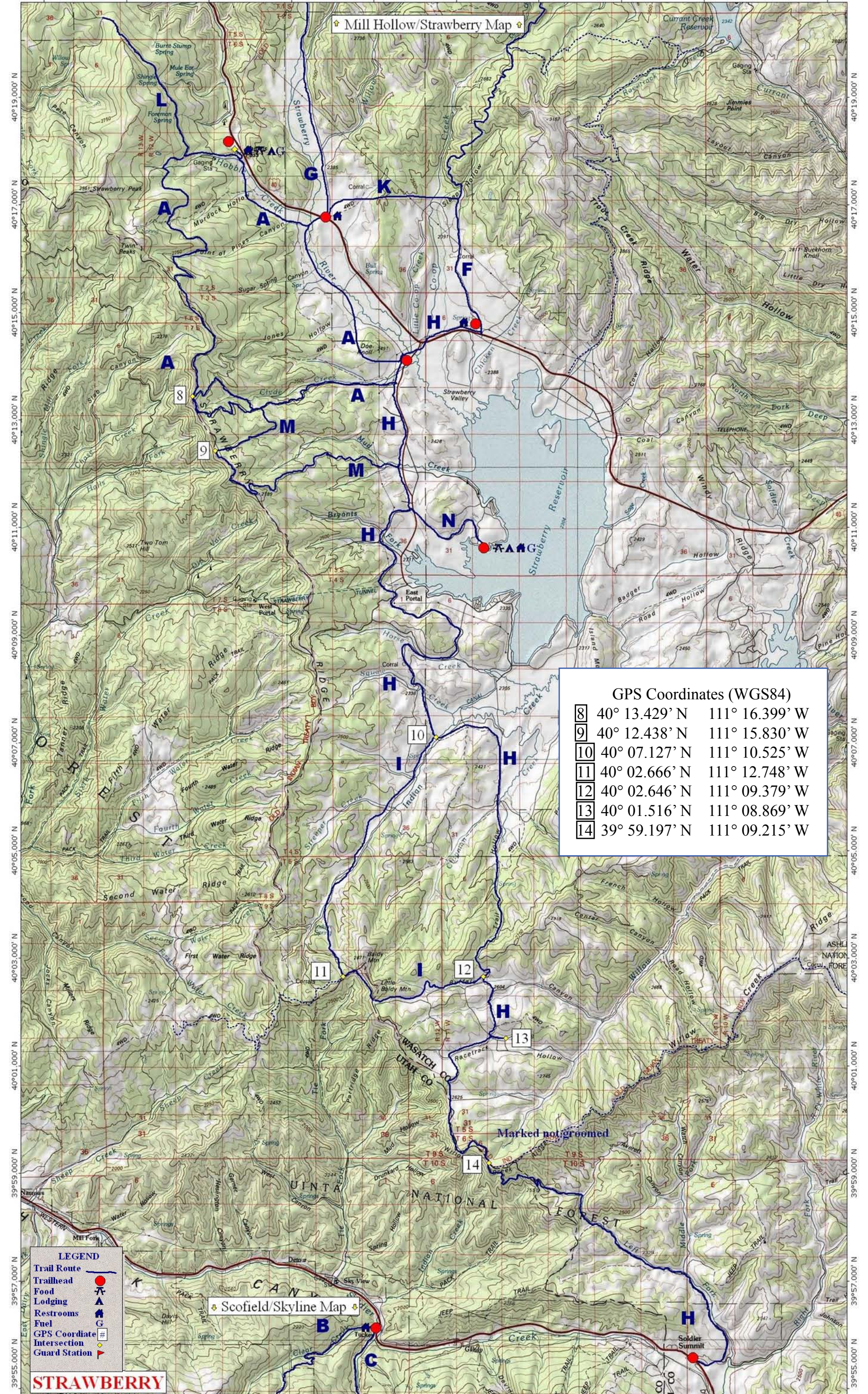
Printed on recycled paper.



★ STRAWBERRY COMPLEX



Mill Hollow/Strawberry Map



GPS Coordinates (WGS84)	
8	40° 13.429' N 111° 16.399' W
9	40° 12.438' N 111° 15.830' W
10	40° 07.127' N 111° 10.525' W
11	40° 02.666' N 111° 12.748' W
12	40° 02.646' N 111° 09.379' W
13	40° 01.516' N 111° 08.869' W
14	39° 59.197' N 111° 09.215' W

LEGEND

- Trail Route
- Trailhead
- Food
- Lodging
- Restrooms
- Fuel
- GPS Coordinate
- Intersection
- Guard Station

STRAWBERRY

Scofield/Skyline Map